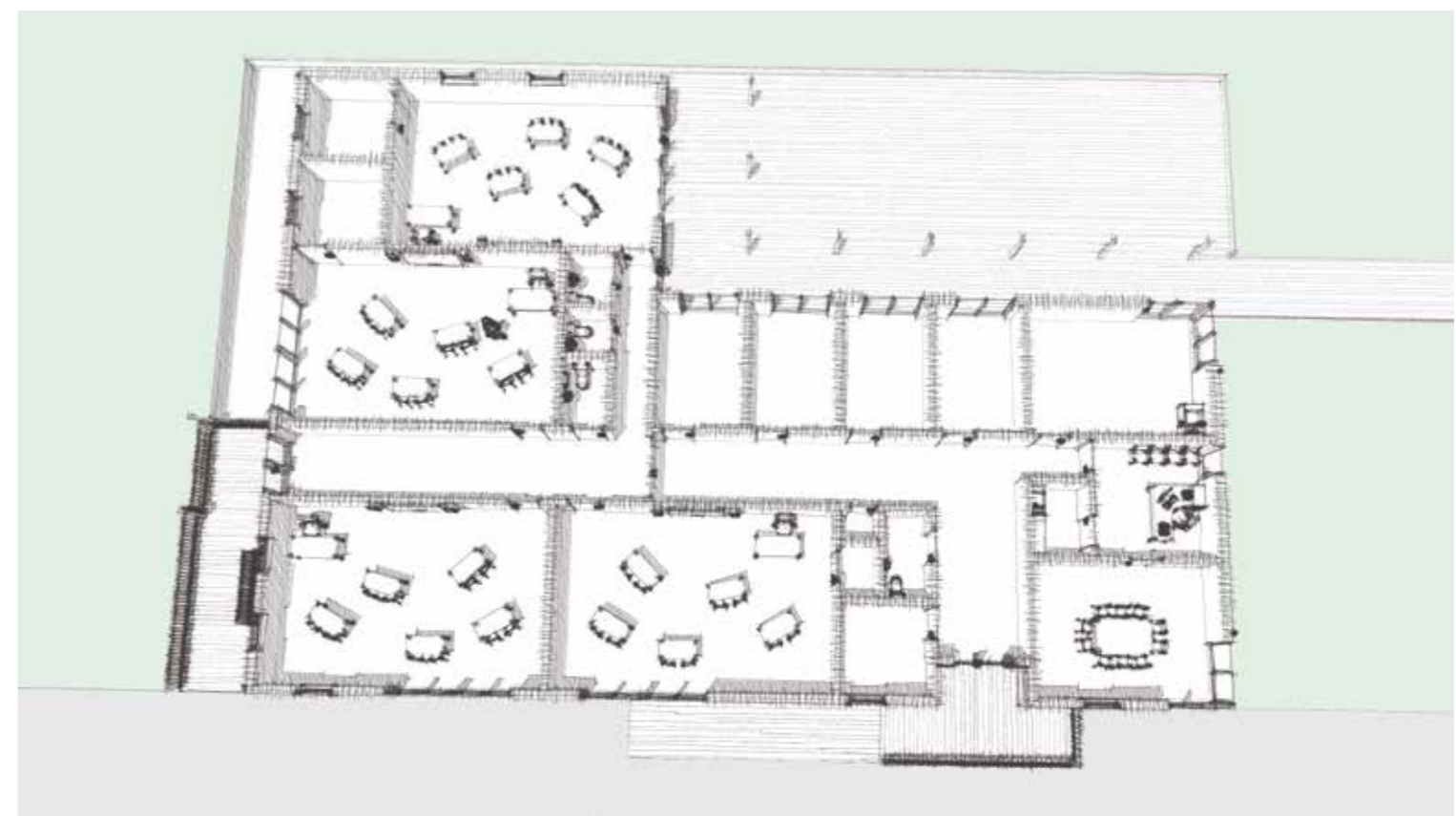
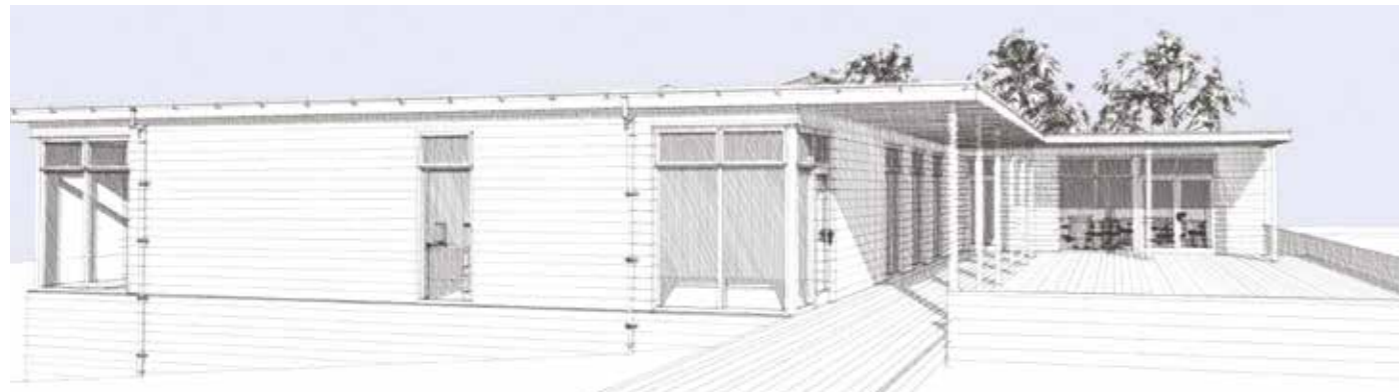


Case Study: **Rossendale School**

Multi room block with five classrooms, six therapy rooms and office space. £620k net



Rossendale School provides a first class education for up to 70 young people aged between 8 and 18 years old who have social, emotional and mental health needs.

As a specialist SEN provision the pupils need inspiring spaces to be able to engage positively in their learning. TG Escapes were selected to provide a building due to the quality of the space and the “feel” that it was light, airy and spacious as well as being cost effective.

“Our pupils feel valued and like the roominess and light of their new learning space. The cedar building also has a warmth that is hard for them to put into words but, basically, they feel comfortable.” David Duncan, Headteacher

